



SCHNEIDER INTERNATIONAL

Hirschstraße 16,
69190 Walldorf, Germany

T +49 6227 3990116 / +49 163 2569128

contact@schneiderlifts.com
www.schneiderlifts.com

PANASIA, AFRICA & MIDDLE EAST HQ

Bou Halka Street 11, 90085 Fanar
Simon Massaad Building, Lebanon

T +961 1 870093 / +961 1 892682

contact@schneiderlifts.com
www.schneiderlifts.com

SCHNEIDER
Lifts & Components

SCHNEIDER PRODUCT CATALOGUE

**GERMAN
ENGINEERING.
TIMELESS
DESIGN.**

OUR STORY

Schneider Steuerungstechnik GmbH was founded in 1990. It was the first to introduce the single-board elevator microprocessor controller in the world. As a veteran in the electrical and elevators fields, its founder Anton Schneider and his high-end quality innovative, advanced and sophisticated. Control System, gained notoriety in various markets leading him to supply in only two years world renown brands such as Thyssen, Otis and Schindler. Schneider International was then established in 2007 as a full-grown German quality manufacturer of complete elevators under the brand "Schneider Lifts & Components".

As the world watched disruptive innovations transform people's lives during that year, from the iPhone unprecedented touchscreen smart phone, to the electrical vehicles raising awareness on environmental sustainability, Schneider Lifts & Components rode all along the wave to achieve a major change in the industry too with our complete

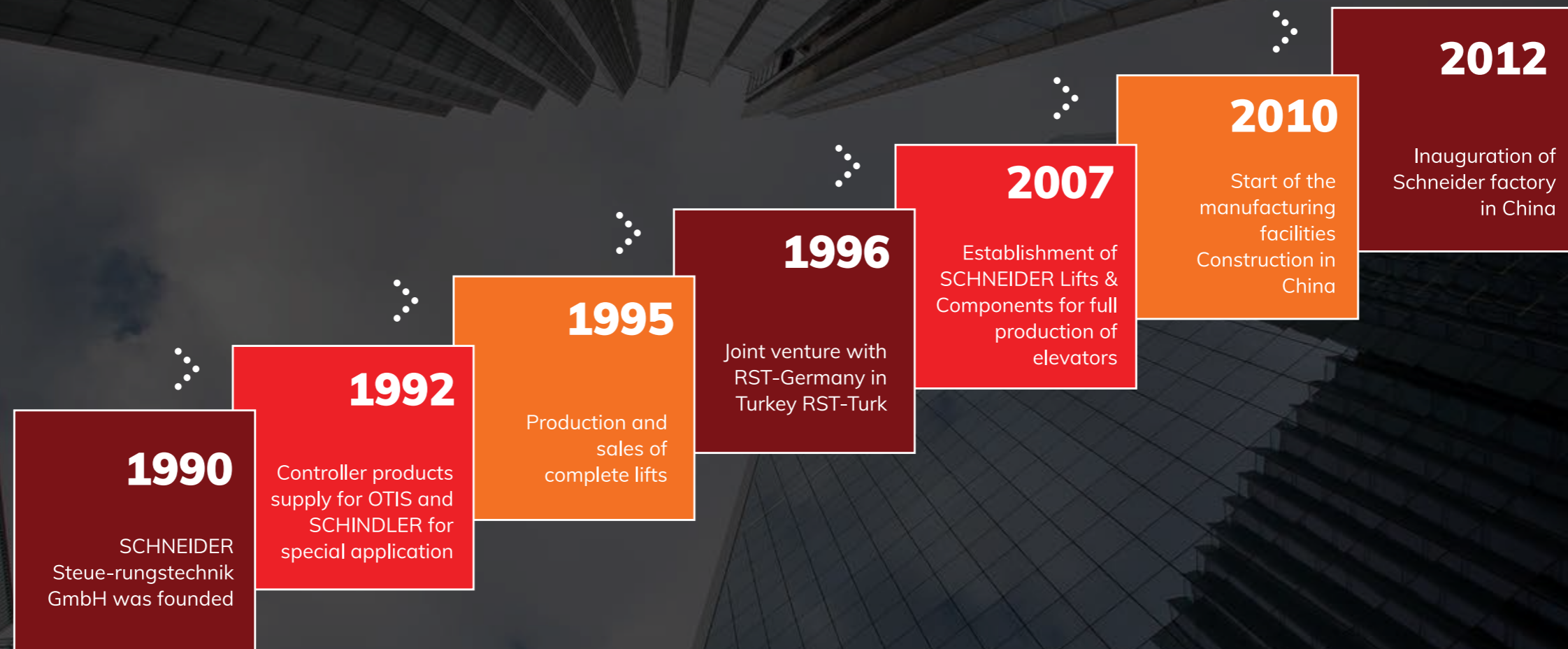


elevators. Soon it became a reference for comprehensive elevators solutions with the acquired cross-disciplinary expertise and standards of Schneider Steuerungstechnik GmbH.

Today, backed by its cutting-edge production facilities in China, one of the largest plants in Pacific Asia, Schneider Lifts & Components, marries state-of-the-art technology and design customization, all crowned by the acclaimed German quality standards. Schneider Lifts & Components is today an international power house, mastering the entire spectrum of elevators' and escalators' equipment and services, from conceptual design to implementation and final delivery. Our extensive network spread all over the world, has witnessed the construction of landmark projects in the Middle East, Africa, and Pan Asia.

SCHNEIDER LIFTS & COMPONENTS is today an international power house, mastering the entire spectrum of elevators' and escalators' equipment and services.

OUR MILESTONES



DESIGN CENTER

SCHNEIDER Elevators sets the design and equipment in the elevators equivalent to the technical precision and the highest quality demands on engineering skills.

Knowing how people react in and towards our product through non-verbal communication between man and machine is vital to SCHNEIDER. Security must be tangible, and space comforting. Large mirrors, for instance, give a feeling of enlarged space and handrails a sense of stability.

The combination of aesthetic and material plays a major role in the workmanship, and the attention to detail gives space for a special experience. Elegant designs create comfort and well-being while being lifted to the desired level.

The SCHNEIDER design center uses the latest mapping and analytical software combined with years of expertise of our specialists to create layout simulation and equipment selection for the specific needs of each building and customer.

The R & D department not only provides our professional car design platform for you to choose from, but also provides programs tailored for you according to the style of your building.



TOP-GRADE EQUIPMENTS

SCHNEIDER owns internationalized production workshops using imported world class manufacturing machines such as high precision Laser cutting machines. Under the guidance of the highly rigorous R & D center, the high precision machinery together with the use of first class material results in the outcome of high quality elevators finding great favor in the eyes of vast customers over the years.



The responsibility of SCHNEIDER is as mighty as the mountains, high and new tech grants the thoughts to go further and further.

STATE-OF-THE-ART TECHNOLOGY

“Building Efficiency”

One of SCHNEIDER elevators main objective is to transport as many people, in the shortest time possible, with the outmost safety precision within the building, while making the ride as smooth and comfortable as possible in incorporated individual designs.

Integrated control system and high speed travel

The SCHNEIDER integrated microprocessor controller is the brain behind it all. Using high speed bus communication between the main microprocessor module, the inverter and remote interacting modules guarantees a high precision speed control for elevator reaching speed up to 7 m/s.



Travel comfort

The real time monitoring of all functions and speed control allows the controller to compute and execute the most comfortable acceleration, deceleration, and stopping of the car with outstanding accuracy.



Group control

The modular system allows a wide range of applications as they are needed. From single units via duplex operation to group control up to 8 units, all is part of the integrated system. Whether 2 floors or 64 floors, the SCHNEIDER controller is setting the standards. The closest unit will be dispatched to each call. Furthermore, this might be varied after analyzing the current load status of the designated elevator. In case the designated cabin is already operating in “near full load” capacity, another unit will be dispatched to collect the waiting passenger instead.



Parking floors

SCHNEIDER will dispatch –if requested- idle units to various designated floors in order to reduce the waiting time in case of receiving calls from any floor. The optional use of our state of the art artificial intelligence through fuzzy logic makes it possible to memorize the traffic during different peak hours and by analyzing this data, to dispatch the idle units to the parking floors accordingly.



Destination Dispatching System (DDS)

The use of SCHNEIDER's cutting edge fuzzy logic technology in high rise and high traffic buildings makes the elevators extremely efficient. The characteristic of this system is developed in a way to obtain the information of the destined floor prior to the lift distribution, meaning, that the arrival time of the passenger is already considered and the passenger is guided to the designated lift before it arrives. This system can greatly reduce the waiting time and increase the efficiency of all lifts compared to the classical group control.



ENERGY SAVING / GREEN

Control System Energy Saving Technology

The SCHNEIDER controller greatly reduces the power consumption by using the elevators more efficiently with the group control, parking floor, and DDS system features. In addition to the use of the variable voltage, the variable frequency drive reduces the power consumption compared to classical elevators by up to 50%.



Illumination System Energy Saving Technology

In smaller buildings or villas where the elevators are idle for long hours, automated light on-off switching has a significant energy saving impact.



Traction Machine Energy Saving Technology

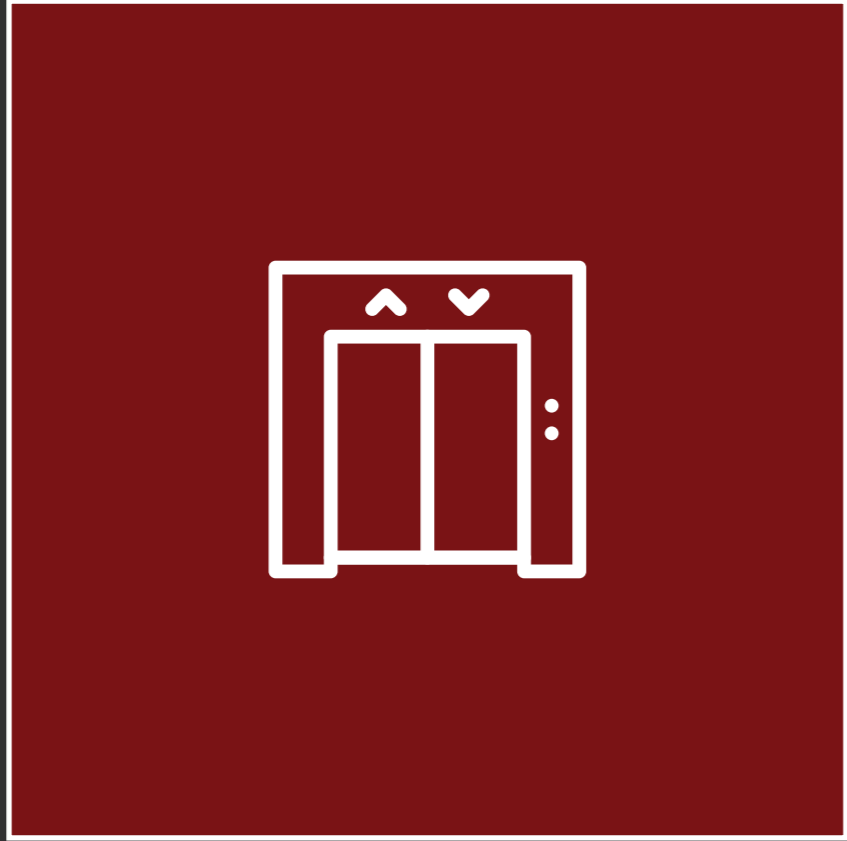
The new generation of Schneider elevators would smartly stand by when there is no passenger; When there are passengers, it would optimize its out power according to the actual load condition. When its going downwards, it could generate power and feedback to the power system for other equipment.



Controller Energy Regeneration Technology

SCHNEIDER's use of a state of the art Energy Regenerator Device can "feedback" excessive energy of the inverter during the braking state back to the power grid. This effectively reduces the power consumption of the elevator.





ELEVATORS

K300/K310 Passenger elevator

SCHNEIDER ELEVATORS APPEAR MORE DIGNIFIED BECAUSE OF OUR UNIQUE DESIGN TECHNOLOGY.

SCHNEIDER's K300/K310 elevators are based on three properties.

Energy-saving concept

SCHNEIDER's passenger elevator series have an adaptive advanced computer control system and a precision leveling of zero error allowing passengers to enjoy noise-free operations without any barriers.

The experience of using SCHNEIDER's passenger lifts is exclusive, comfortable, energy efficient, and user friendly.

Design concept

SCHNEIDER's K300/K310 lifts are widely used in commercial office buildings, hotels, luxury apartment buildings as well as a variety of other types of buildings. With unique décor and excellent design, it enhances not only the work experience but also the quality of life for anyone using it.



Price concept

SCHNEIDER has been working on advanced technology lifts for years. Throughout the years, our manufacturing process has matured so that production conditions greatly improved production efficiency.

Whether it's for condo or housing associations, property managers or in private residences, we are in the business of moving people to fulfill their daily needs, whether your concern is quality, reliability, safety, or service; we have it all. The comfort of your tenants is our highest priority; therefore we emphasize floor leveling performance, door opening/closing times, and other factors that make your elevator more user friendly.

Residential lifts are the hassle-free answer to your passenger mobility needs.



K320 High rise building

REMARKABLE SPEED UNDER ANY CONDITIONS.

SCHNEIDER manufactures and installs innovative high-speed movement elevators aimed to compliment the high density passenger flow in high-rise buildings, with maximum levels of safety and comfort. SCHNEIDER elevators for high-rise structures, both with or without a machine room, can be adapted and installed to any type of building, promising exceptional ride quality.

Shaft sizes can be smaller than ever before, ensuring the same performance thanks to the advanced technology that SCHNEIDER offers. These elevators promise eco-efficient, smooth & silent ride quality, as well as ingenious design to ensure the perfect interior for your elevator.

As a leading figure in the elevator industry, SCHNEIDER researches into and develops the more stable, effective, superior, and frontline high speed elevator through tackling numerous difficulties.



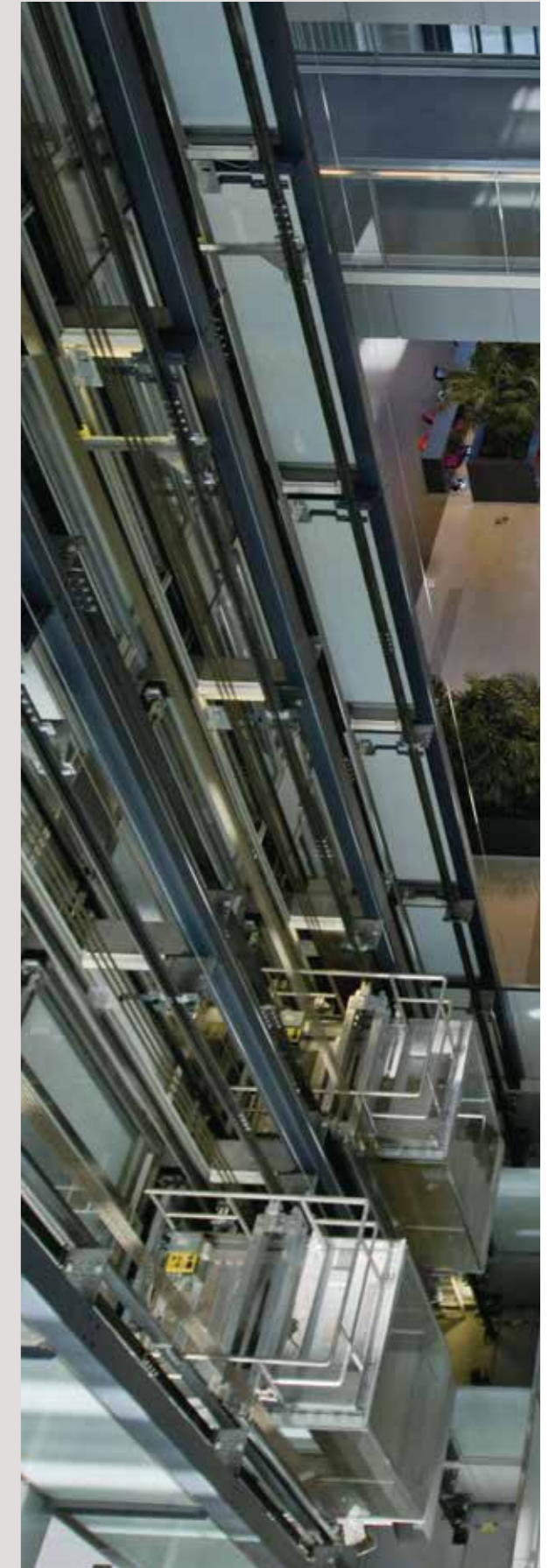
G200 Panorama elevator

IT IS BOUND TO BECOME THE FOCUS OF ATTENTION.

One of the most prestigious types of elevators that we offer are our G200 panoramic elevators. They can be located in all types of places, whether in shopping malls, distinguished business centers, glamorous hotels & restaurants, or inside ravishing homes.

SCHNEIDER panoramic elevator relaxes your heart and soul, giving you a scenic voyage which invites you to enjoy the surrounding urban vistas. Our unique design allows for a taste of city life from a special perspective. It has a VVVF inverter-driven energy-saving configuration making the panoramic elevator more energy efficient and comfortable.

The design of the G200 features a rich decorative style matching well with the building's unmatched ambience changing the whole environment in which it operates.



B200 Hospital elevators

THE ELEVATOR THAT HELPS SAVE THE LIVES OF PEOPLE YOU CARE ABOUT. THE PERFECT MARRIAGE OF TECHNOLOGY AND DESIGN THAT ENHANCES RESPONSE TO MEDICAL EMERGENCIES.

The SCHNEIDER B200 Hospital elevator is designed to support the needs of patients and doctors. In the life-saving missions of hospitals, modern medical centers, nursing homes, and other health care institutions; SCHNEIDER's hospital lifts help medical personnel get to their patients rapidly where every moment counts. Furthermore, we believe that giving the patient a rapid and stable elevator experience is part of our corporate responsibility. The B200 elevator is especially designed to support the needs of patients and doctors.

High efficiency and low noise

The application of the permanent magnet synchronous motor changes the traditional drive mode of the traction machine, making it more effective and noise-reducing.

The comfortable travel does not merely stay in the visual effects

The VVVF control module offers low-noise advantages of running with the advanced control system, so that the elevator runs calmly and smoothly. Fresh atmosphere in the car reduces patient's stress and offers protection from unwanted jolts giving a ride of comfort.



H200 Freight elevator

THE LIFT TO TRANSPORT ANY TYPE OF LOAD WITH EASE AND CONVENIENCE.

The SCHNEIDER H200 Freight elevator uses the world's most advanced control technologies to protect the high strength precision control allowing both the good and passenger a smooth and comfortable ride. Our H200 lifts have a wide variety of specifications designed to meet your needs whether in a factory, warehouse, department store, property center, or other units; this lift will help your business run smoothly.

We understand the demands of industrial environments; the H200 freight lift can operate in a variety of harsh and strenuous environments, able to transport any type of load easily.

The safe weighing system

Strict load control is implemented to prevent accidental overloading and by that ensuring the safety of the lifts.

The more skid-proof ground material

Each H200 elevator is equipped with a non-slip trade plate, making the car slip-proof even in oily and greasy conditions, also generating enough friction to prevent persons from slipping and the cargo from sliding, effectively protecting the safety of personnel and goods.

The larger landing range

The loading weight of our freight lift ranges from 500kg to 5,000kg.



H300 Car elevator

INFINITE FLEXIBLE POSSIBILITIES.

SCHNEIDER's H300 Car elevator uses VVVF technology to reduce energy consumption and operating noise, and promises smooth and quiet operations. The H300 provides maximum convenience and safety promising a long life cycle through its required operation.

SCHNEIDER's car elevator
can easily cope with awful
environments



J200 Home elevator

AN ELEGANT SOLUTION FOR YOUR HOME.

SCHNEIDER's J200 Home elevator is committed to improve your quality of life and give you the freedom to move around your property. Manufactured according to European standards, the J200 is as safe and secure as can be. With the most significant energy efficiency, innovative design, and commitment; you simply can't go wrong!

Convenient

220v single phase AC powered, the lift can be installed in the hall where customers can choose the door frame according to their own preferences.

Energy-Saving

No noise, no oil leaking, minimal power consumption.



The background features a grayscale photograph of a multi-story building's exterior. On the left, there is a wall with horizontal corrugated metal siding. To the right, a glass-enclosed elevator shaft is visible, with a person standing on a balcony or platform inside. A white rectangular box is overlaid on the right side of the image, containing the text 'ELEVATOR DECORATION' in a white, serif, all-caps font.

ELEVATOR DECORATION



ELEVATOR DECORATIONS

Passenger elevator car decoration

Standard collocation



360° panoramic show

SC-C-A

Ceiling: Hairline stainless steel + acrylic + downlights
 Car wall: Hairline stainless steel,
 Floor: PVC

The pictures are plotted by computer and are likely somewhat different from the actual products.

Passenger elevator car decoration



360° panoramic show

SC-C10

Ceiling: Hairline stainless steel + acrylic + downlights
 Car wall: Hairline stainless steel, Mirror stainless steel +
 Mirror etching stainless steel
 Handrail: Brushed stainless steel round tube
 Floor: PVC



360° panoramic show

SC-C12

Ceiling: Mirror stainless steel frame with acrylic craft board
 Cabin: Hairline stainless steel, Mirror etching stainless steel
 Handrail: Hairline stainless steel flat handrail
 Floor: PVC



360° panoramic show

SC-C11

Ceiling: Hairline stainless steel + acrylic + downlights
 Car wall: Black Mirror stainless steel +
 Mirror etching stainless steel
 Handrail: Hairline stainless steel flat handrail
 Floor: PVC



360° panoramic show

SC-C13

Ceiling: Hairline stainless steel frame, Mirror stainless steel,
 with acrylic craft board
 Cabin: Hairline stainless steel + mirror etching stainless steel
 Handrail: Hairline stainless steel round handrail
 Floor: PVC



The pictures are plotted by computer and are likely somewhat different from the actual products.

The pictures are plotted by computer and are likely somewhat different from the actual products.

Passenger elevator car decoration



360° panoramic show

SC-C14

Ceiling: Ti-gold stainless steel frame with acrylic craft board
 Cabin: Ti-gold mirror stainless steel, Ti-gold mirror etching
 Handrail: Ti-gold stainless steel and wooden handrail
 Floor: PVC



360° panoramic show

SC-C16

Ceiling: Mirror titanium stainless steel + acrylic + downlights
 Front wall: Mirror titanium stainless steel
 Side wall: Mirror etched titanium stainless steel
 Rear wall: Mirror etched titanium stainless steel
 Floor: PVC



360° panoramic show

SC-C18

Ceiling: Hairline stainless steel + acrylic
 Car rear wall: Decoration veneer steel + mirror stainless steel
 Car side wall: Decoration veneer steel + mirror stainless steel
 Car front wall: Hairline stainless steel
 Floor: PVC



360° panoramic show

SC-C19

Ceiling: Mirror stainless steel + acrylic + LED downlights + decoration veneer steel
 Car rear wall: Decoration veneer steel + mirror stainless steel
 Car side wall: Decoration veneer steel + mirror stainless steel
 Car front wall: Hairline stainless steel
 Handrail: Hairline stainless steel round
 Floor: PVC

The pictures are plotted by computer and are likely somewhat different from the actual products.

The pictures are plotted by computer and are likely somewhat different from the actual products.

Panorama elevator car decoration



360° panoramic show

SSE-210

Ceiling:	Hairline stainless steel + acrylic lamp decoration + downlight
Front wall:	Hairline stainless steel
Side wall:	Hairline stainless steel + laminated glass
Rear wall:	Safety laminated glass
Handrail :	Round brushed stainless steel tube
Floor:	PVC imitation marble



360° panoramic show

SSE-220

Ceiling:	Mirror stainless steel + mirror strips + downlight
Front wall:	Hairline stainless steel
Side wall:	Hairline stainless steel + safety laminated glass
Rear wall:	Safety laminated glass
Handrail :	Round brushed stainless steel tube
Floor:	PVC imitation marble



360° panoramic show

SSE-230

Ceiling:	Long hairline stainless steel + acrylic
Front wall:	Long hairline stainless steel
Side wall:	Long hairline stainless steel + safety laminated glass
Rear wall:	Safety laminated glass
Handrail :	Mirror stainless steel tube floor handrail
Floor:	PVC



360° panoramic show

SSE-240

Ceiling:	Hairline stainless steel + acrylic lamp decoration
Front wall:	Hairline stainless steel
Side wall:	Hairline stainless steel
Rear wall:	Safety laminated glass
Handrail :	Stainless steel round tube
Floor:	PVC



The pictures are plotted by computer and are likely somewhat different from the actual products.

The pictures are plotted by computer and are likely somewhat different from the actual products.

Panorama elevator car decoration



360° panoramic show

SSE-250

Car cover:	Paint steel, and lighting decoration
Panorama wall:	Laminated glass (3pcs)
Ceiling:	Paint steel and acrylic lighting decoation
Car wall:	Hairline finished St/St
Handrail:	Stainless steel tube
Floor:	PVC floor



360° panoramic show

SSE-260

Ceiling:	Hairline stainless steel + acrylic lamp decoration + downlight
Front wall:	Hairline stainless steel
Side wall:	Hairline stainless steel
Rear wall:	Safety laminated glass
Handrail :	Round brushed stainless steel tube
Floor:	PVC imitation marble



Hospital elevator car decoration



360° panoramic show

SC-Y01

Ceiling:	Hairline stainless steel, acrylic sheet, LED energy-saving downlights
Cabin:	Hairline stainless steel
Car door:	Hairline stainless steel
Handrail:	Hairline stainless steel flat handrail
Lighting:	LED down light
Floor:	Marble (Standard)



ST-DS

The pictures are plotted by computer and are likely somewhat different from the actual products.

The pictures are plotted by computer and are likely somewhat different from the actual products.

Freight elevator car decoration



SSE-J060

Standard

Ceiling	Paint steel (optional color)
Car wall	Paint steel (optional color)
Car door	Paint steel (optional color)
Skirtboard	Fluorescent lamp
Floor	Rifflid plate



360° panoramic show

The pictures are plotted by computer and are likely somewhat different from the actual products.



SSE-J070

Optional

Ceiling	Hairline stainless steel
Car wall	Hairline stainless steel
Car door	Hairline stainless steel
Skirtboard	Fluorescent lamp
Floor	Rifflid plate



360° panoramic show

The pictures are plotted by computer and are likely somewhat different from the actual products.

Car operation panel



ST-S31H
Hairline Stainless Steel
Surface mounted, slim type
(Without bottom case)

ST-S32H
Hairline Stainless Steel
Surface mounted, slim type
(Without bottom case)



CL -60C-H
Hairline stainless steel

CL -60C-M
Mirror stainless steel

CL -60C-T
Titanium stainless steel

CL -100C-A
Hairline stainless steel
(Integrated)

ST-T36M
Mirror stainless steel
Traditional boxed type
(With bottom case)

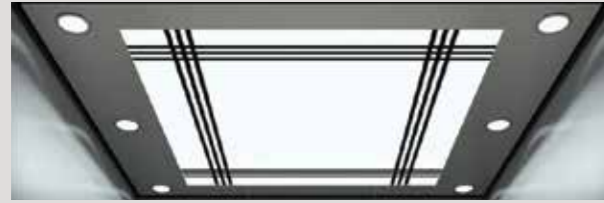
ST-T37M
Titanium stainless steel
Traditional boxed type
(With bottom case)

The pictures are plotted by computer and are likely somewhat different from the actual products.

The pictures are plotted by computer and are likely somewhat different from the actual products.

Decorative of elevator car (option)

Car ceiling (option)



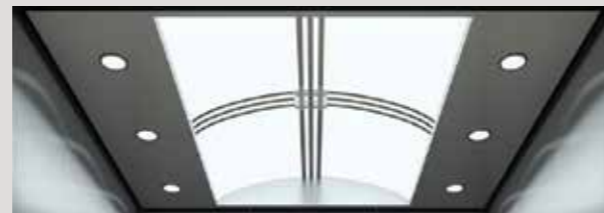
CD-001
Hairline stainless steel frame with acrylic top panel, downlights



CD-002
Hairline stainless steel frame, acrylic lighting cover, downlights



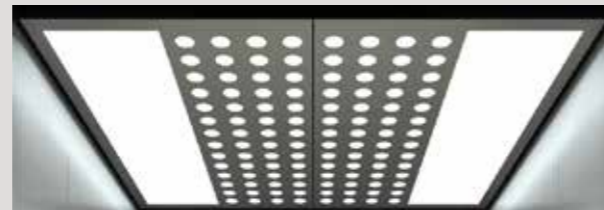
CD-003
Hairline stainless steel frame with acrylic top panel, downlights



CD-004
Hairline stainless steel frame, acrylic lighting cover, downlights



CD-005
Ti-plated stainless steel frame with acrylic top panel, downlights



CD-006A
Hairline stainless steel frame with multi-layer lighting board, acrylic lighting decoration



CD-009
Ti-plated stainless steel frame with acrylic top panel, checked



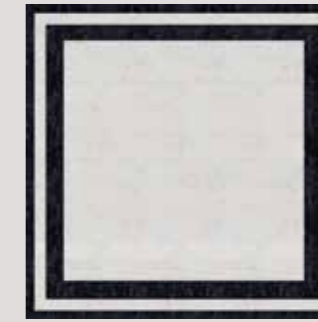
CD-010
Ti-plated stainless steel frame, dusting steel plate, down lights with inner lighting fixture

The pictures are plotted by computer and are likely somewhat different from the actual products.

Floor (option)



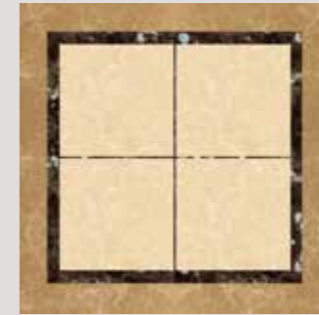
FL-009



FL-010



FL-011



FL-012



FL-014



FL-015



FL-016



FL-017



FL-018

The pictures are plotted by computer and are likely somewhat different from the actual products.

Handrail (option)



HR-001
Hairline stainless steel mono-tube



HR-002
Titanium gold mirror stainless steel mono-tube



HR-003
Titanium gold mirror stainless steel double-tube



HR-004
Hairline stainless steel double-tube



HR-005
Hairline stainless steel tri-tube



HR-006
Titanium gold mirror stainless steel tri-tube



HR-007
Combination of round wood and titanium gold



HR-008
Combination of stainless steel and titanium gold



HR-009
Short grain titanium gold, arc head



HR-010
Short grain stainless steel, arc head

The pictures are plotted by computer and are likely somewhat different from the actual products.

Landing door (option)

SC-LD-02



Landing door: hairline stainless steel
Jamb: hairline stainless steel

SC-LD-03



Landing door: mirror stainless steel
Jamb: mirror stainless steel

SC-LD-04



Landing door: mirror stainless steel + glass
Jamb: mirror stainless steel

SC-LD-05



Landing door: titanium etched stainless steel
Jamb: titanium stainless steel

The pictures are plotted by computer and are likely somewhat different from the actual products.

Passenger elevator function table

Standard function

Function	Description of functions
Automatic operator	The lift automatically runs and stops, opens / shuts the door according to designated command.
Operation by operator	The lift automatically runs and stops, manually shuts the door according to designated command.
Overhaul operation	Under repair and inspection conditions, the lift runs at inspection speed through operating "slow up / slow down" buttons.
Upper automatic door-opening	When the lift is electrified and the car is in the door zone, it will open the door automatically.
Automatic door-shut time-delay	After the car door has been opened completely, it keeps the door open condition, It automatically shuts the door after time-delay.
Call for opening of this floor	When the lift is shutting the door or it does not start but has closed the door, when there is any outer calling from this landing, it will reopen the door.
Optical curtain protection	When light curtain is hindered, it immediately stops door-shut action and automatically opens the door.
Over-load none door-shut	It does not shut the door in overload, And it is bright from overload lamp, The buzzer rings, It shows CZ or overload in the car and does not start the lift.
Full-load direct running	When it reaches the rated load, it only responds to internal selection instead of outer calling.
Automatic lighting & fan control	In the stipulated time, if the lift does not receive any travel command, the lighting will automatically die out, It automatically opens at command.
Contactors protection	The system can detect whether motor circuit contactor action is reliable or not, If any abnormal condition happens, it will stop the lift travel.
Main contactor protection	After the lift executes door-shut command, if the door has not been closed within the stipulated time, it will re-open the door and then shut it again.
Landing floor, direction display in the car	It shows the landing floor of the lift, the direction where the lift is going to travel in the car.
Direction chosen by driver	The running direction is determined by the driver's directive.
Trouble diagnosis	When there is something wrong in the travel process, it will automatically diagnose the trouble cause, display in the operation panel and automatically store the latest trouble information.
Door interlocking protection	If it closes all of door interlocking, it can then start the lift, If door interlocking is disconnected or trembled, the lift will stop the operation.

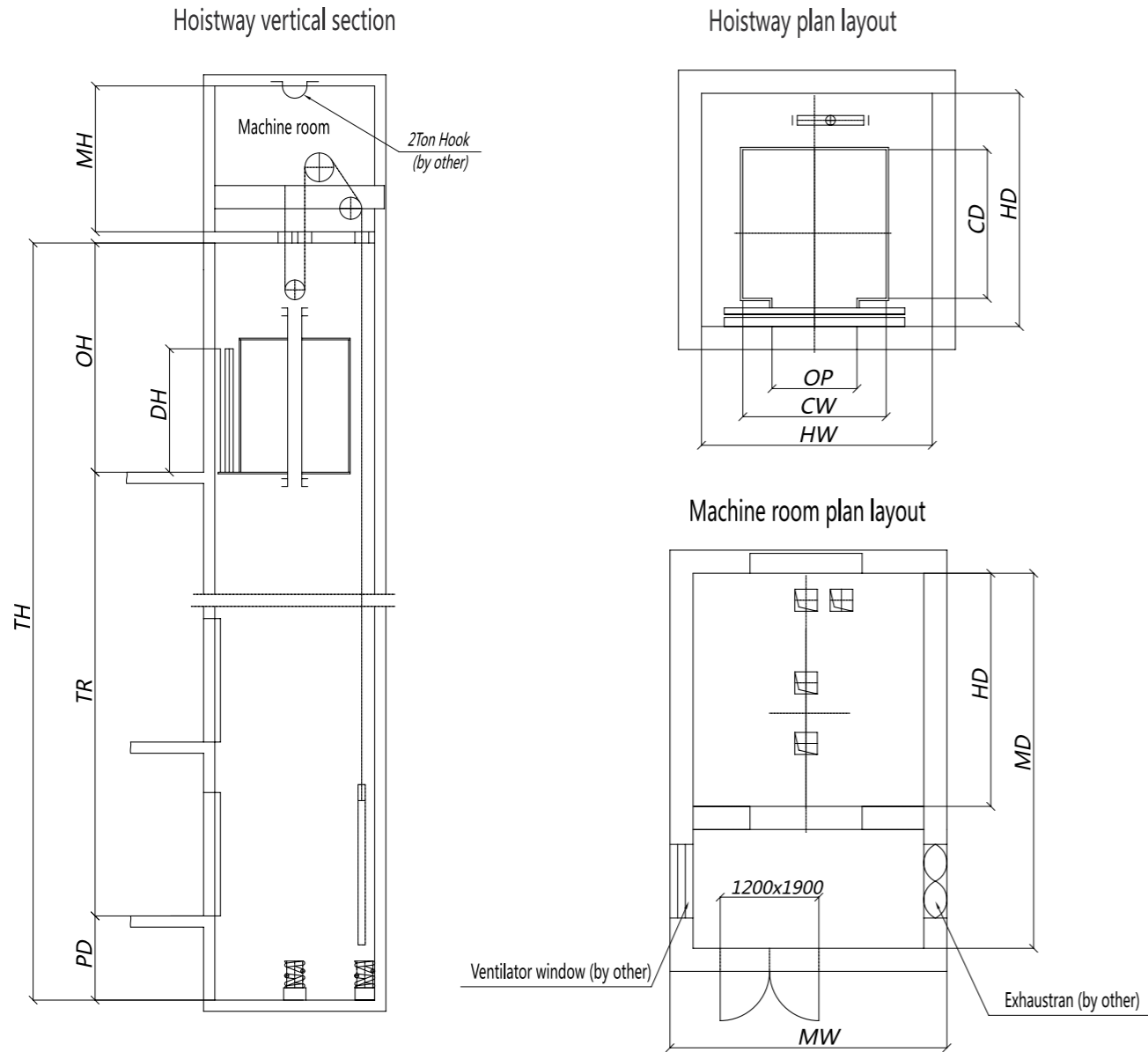
Standard function

Function	Description of functions
Brake test protection	It implement real-time monitor to the brake open / shut through brake arm test switch, If the brake has been opened improperly, the system will not allow the lift to start.
Terminal speed change and landing floor number correction	After the system detect ferminal switch in travel, the lift will be forced to change the speed and automati-cally correct the landing floor display.
Position-Limit protection	If the system detects limit switch action, it will immediately stop the lift travel.
Limit protection	If the system detects limit switch action, the whole system will immediately lose power.
Over-speed protection	When the lift up / down exceeds 1.2 times of the rated speed, it will cut off control mains and stop the lift travel.

Optional function

Function	Description of functions
Fire-fighting running	After fire switch is closed, the system enters into fire-fighting running.
Error operation removal	The repeated operation of internal selection button can cancel selection register.
Arbitrary setup of a skip floor	The lift only serves set floor.
Home landing floor setting	If there has no command within certain period of time in automatic condition, the car automatically travels to set home landing.
Opposite door service setting	It correctly opens and shuts the door according to service setting.
Fire-fighting home landing return function	When the fire-fighting switch is closed, the system enters into the fire-fighting condition and the lift has home landing, It keeps the door-open condition and stops the operation.
Firefight return	When it starts home landing fire-fighting switch, all the commands will be cancelled then, The lift immedi-atly drives to the designated landing and park there.
Door-open waiting function	In automatic condition, the door keeps open without any command, And the lift immediately shuts the door and responds to the command if any.

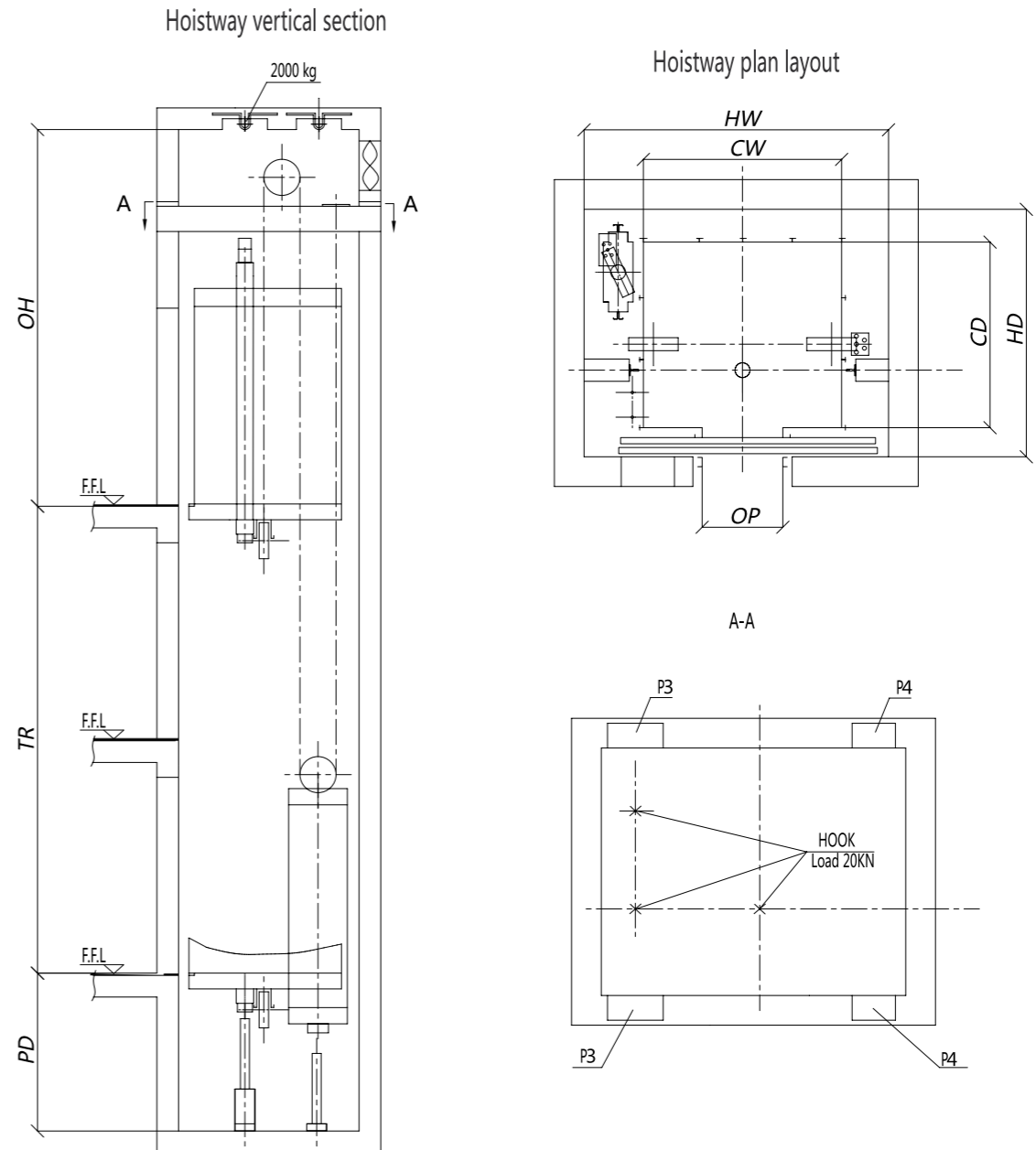
Passenger elevator construction parameters



Model	Load/kg	Speed/ms	Motor power /KW	Car dimension/mm			Hoistway size /mm				Machine room size/mm			Max. loading	Max. lifting height/m
				CW	CD	OP	HW	HD	PD	OH	MW	MD	MH		
SEL450	450	1.0	4.3	1100	1100	800	1800	1750	1400	4300	1800	1750	2200	14	45
		1.5	6.2						1500	4400				20	65
SEL630	630	1.0	4.3	1100	1400	800	1800	2050	1400	4400	1800	2050	2200	14	45
		1.5	6.2						1500	4500				20	65
SEL800	800	1.75	7.5	1350	1400	800	1900	2050	1600	4600	1900	2050	2500	24	75
		1.0	5						1400	4400				14	45
SEL1000	1000	1.5	7.8	1600	1400	900	2150	2050	1500	4500	2150	2050	2500	20	65
		1.75	9						1600	4600				24	75
SEL1250	1250	2.0	9.8	1300	2100	1000	2250	2500	1700	4800	2250	2500	2500	30	90
		1.0	6						1400	4400				14	45
SEL1600	1600	1.5	10	1950	1750	1100	2550	2500	1400	4400	2550	2500	2500	20	65
		1.75	11.7						1500	4600				24	75
SEL1250	1250	2.0	12.3	1300	2100	1000	2250	2500	1600	4700	2250	2500	2500	24	75
		1.0	8.2						1450	4500				14	45
SEL1250	1250	1.5	12.3	1300	2100	1000	2250	2500	1500	4600	2250	2500	2500	20	65
		1.75	14.3						1600	4700				24	75
SEL1600	1600	2.0	16.3	1950	1750	1100	2550	2500	1700	4800	2550	2500	2500	30	90
		1.0	10.5						1450	4500				14	45
SEL1600	1600	1.5	15.7	1950	1750	1100	2550	2500	1500	4600	2550	2500	2500	20	65
		1.75	18.3						1600	4700				24	75
SEL1600	1600	2.0	20.9	1950	1750	1100	2550	2500	1600	4700	2550	2500	2500	24	75
		1.0	6						1400	4400				14	45

The schematic Drawing of civil work is for reference only

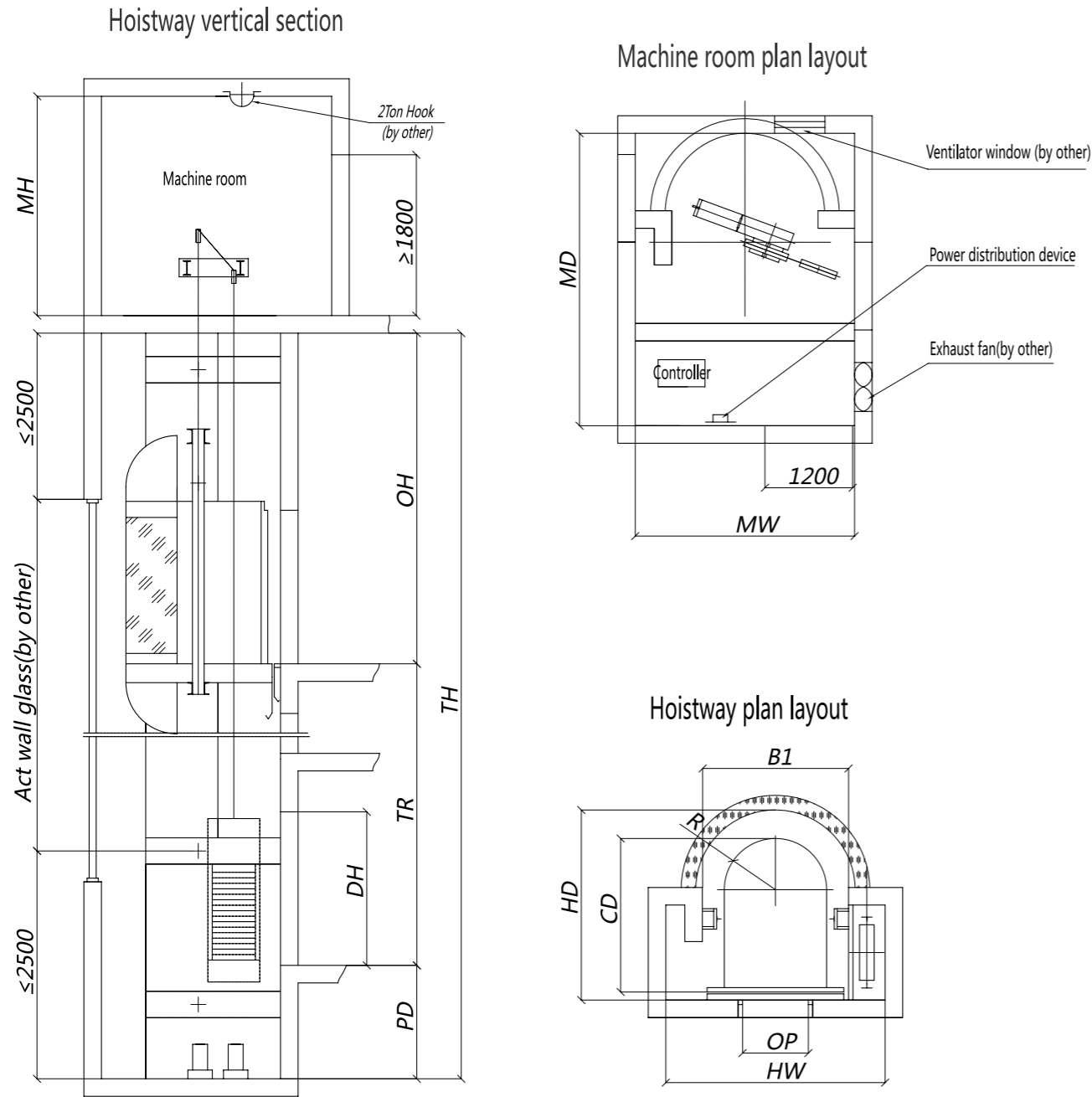
Machine roomless passenger elevator construction parameters



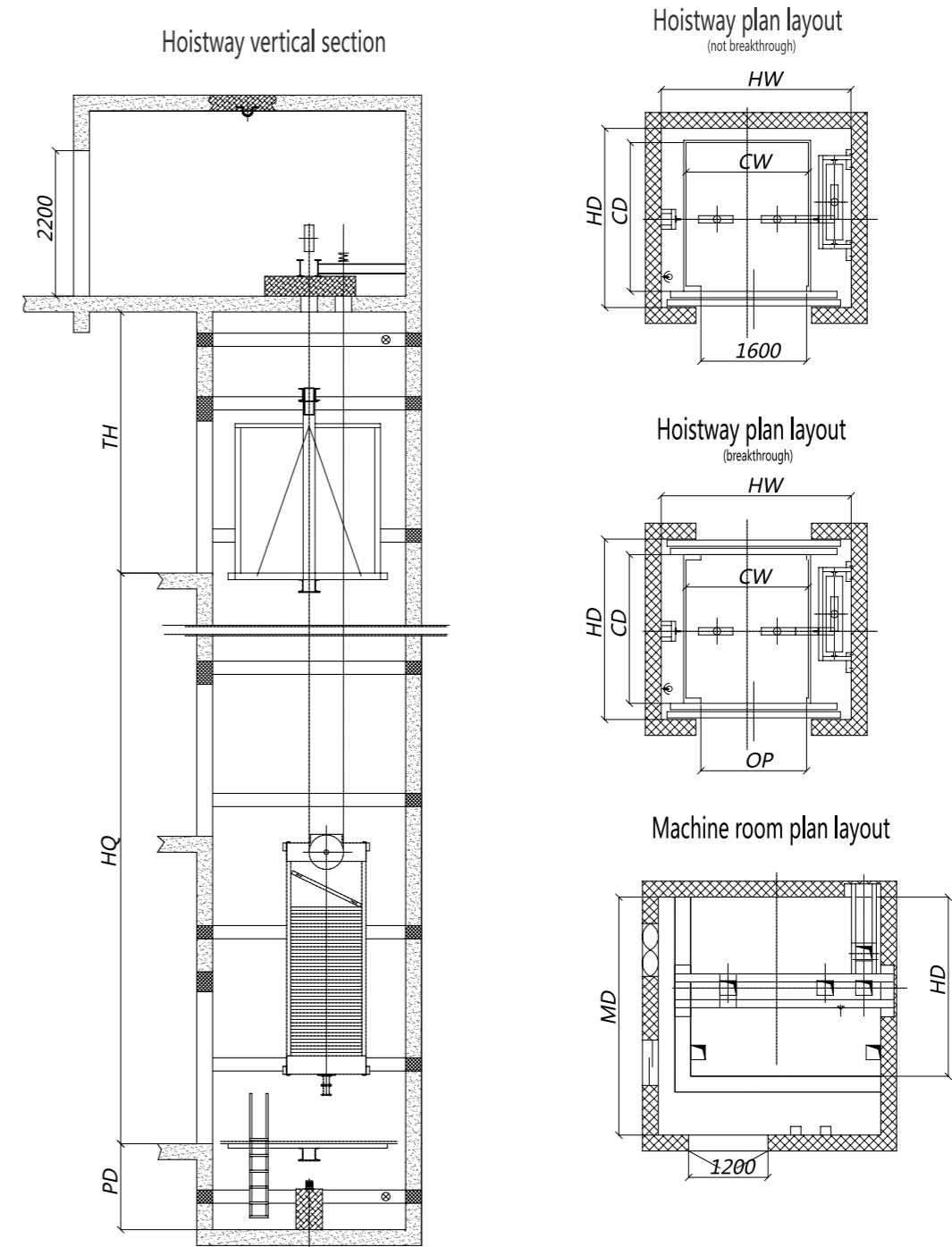
Model	Load/kg	Speed/ms	Motor power /KW	Car dimension/mm			Hoistway size /mm				Max. loading	Max. lifting height/m
				CW	CD	OP	HW	HD	PD	TH		
SEL(MRL)450	450	1.0	4.3	1100	1100	700	1900	1650	1450	4000	14	40
		1.5	6.2						1500	4250		
SEL(MRL)630	630	1.0	4.3	1100	1400	700	1900	1900	1450	4000	14	40
		1.5	6.2						1500	4250		
SEL(MRL)800	800	1.75	7.5	1350	1400	800	2100	1900	1600	4350	24	70
		1.0	5						1450	4200		
SEL(MRL)1000	1000	1.5	7.8	1600	1400	900	2350	1900	1500	4400	20	60
		1.75	9						1600	4500		
SEL(MRL)1250	1250	2.0	9.8	1300	2100	1000	2250	2500	1450	4200	14	40
		1.0	6						1450	4400		
SEL(MRL)1600	1600	1.5	10	1750	1950	1100	2600	2500	1500	4600	14	40
		1.75	11.7						1600	4500		
SEL(MRL)1250	1250	2.0	12.3	1400	1950	1100	2600	2500	1500	4600	14	40
		1.0	8.2						1600	4700		
SEL(MRL)1600	1600	1.5	12.3	1750	1950	1100	2850	2500	1700	4800	24	70
		1.75	14.3						1500	4600		
SEL(MRL)1600	1600	2.0	15.7	1750	1950	1100	2850	2500	1500	4600	14	40
		1.0	6						1450	4400		
SEL(MRL)1600	1600	1.5	15.7	1750	1950	1100	2850	2500	1600	4700	20	60
		1.75	18.3						1700	4800		

The schematic Drawing of civil work is for reference only

Panoramic elevator construction parameters



Freight elevator construction parameters



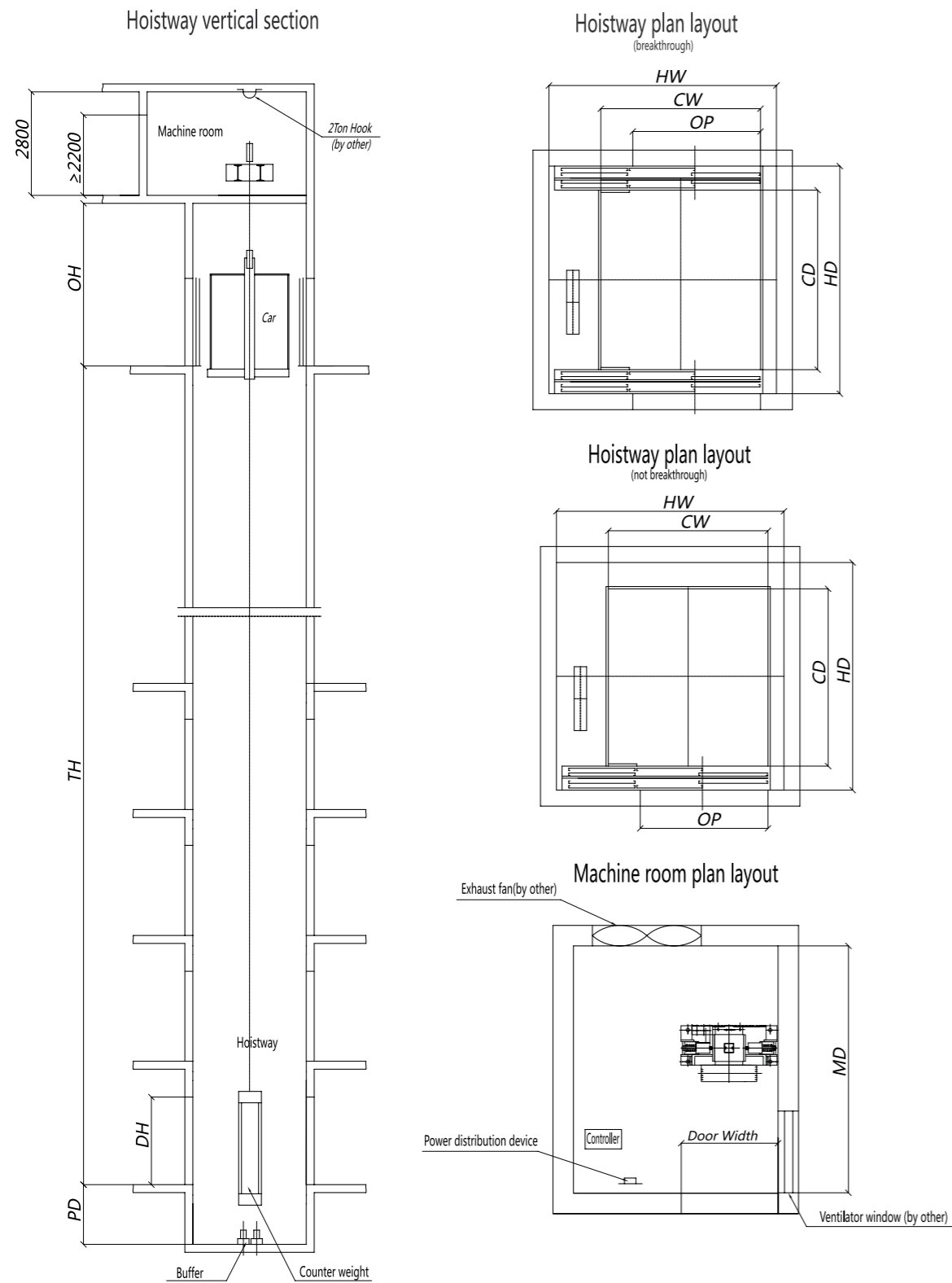
Model	Load/kg	Speed/ms	Motor power /KW	Car dimension/mm			Hoistway size /mm				Machine room size/mm			Max. loading	Max. lifting height/m
				CW	CD	OP	HW	HD	PD	OH	MW	MD	MH		
SEG630	630	1.0	4.3	1200	1750	800	2800	2250	1800	4800	2800	3500	2500	14	45
		1.5	6.2						1900	4900					
		1.75	7.5						2000	5000					
SEG800	800	1.0	5	1400	1800	900	3000	2300	1800	4800	3000	3700	2500	14	45
		1.5	7.8						1900	4900					
		1.75	9						2000	5000					
SEG1000	1000	1.0	6	1400	2100	900	3000	2600	1800	4800	3000	4000	2500	14	45
		1.5	10						1900	4900					
		1.75	11.7						2000	5000					

The schematic Drawing of civil work is for reference only

Model	Load/kg	Speed/ms	Motor power /KW	Car dimension/mm			Wells net single word size open/mm				Max. lifting height/m
				CW	CD	OP	HW	Straight beam installation HD	Its top installation PD	Well way banisters can meet the HW(with single open)	
SEH1000-0.5	1000	0.5	7.5	1400	1700	1200	2400	2200	1400	The bottomless pit depth (with single open)	36
SEH2000-0.5	2000	0.5	11	1850	2250	1500	2850	2750	1400	Top height TH Its top 4300 mm (installation: Straight beam installed 4500 mm; 5 T is equal or greater than 5000 mm)	
SEH2000-0.5	2000	0.5	11	2000	2100	1500	2900	2600	1400		
SEH3000-0.5	3000	0.5	15	2000	2900	1600	3100	3400	1500		30
SEH5000-0.5	5000	0.5	22	2600	3400	2200	3900	3900	1600		

The schematic Drawing of civil work is for reference only

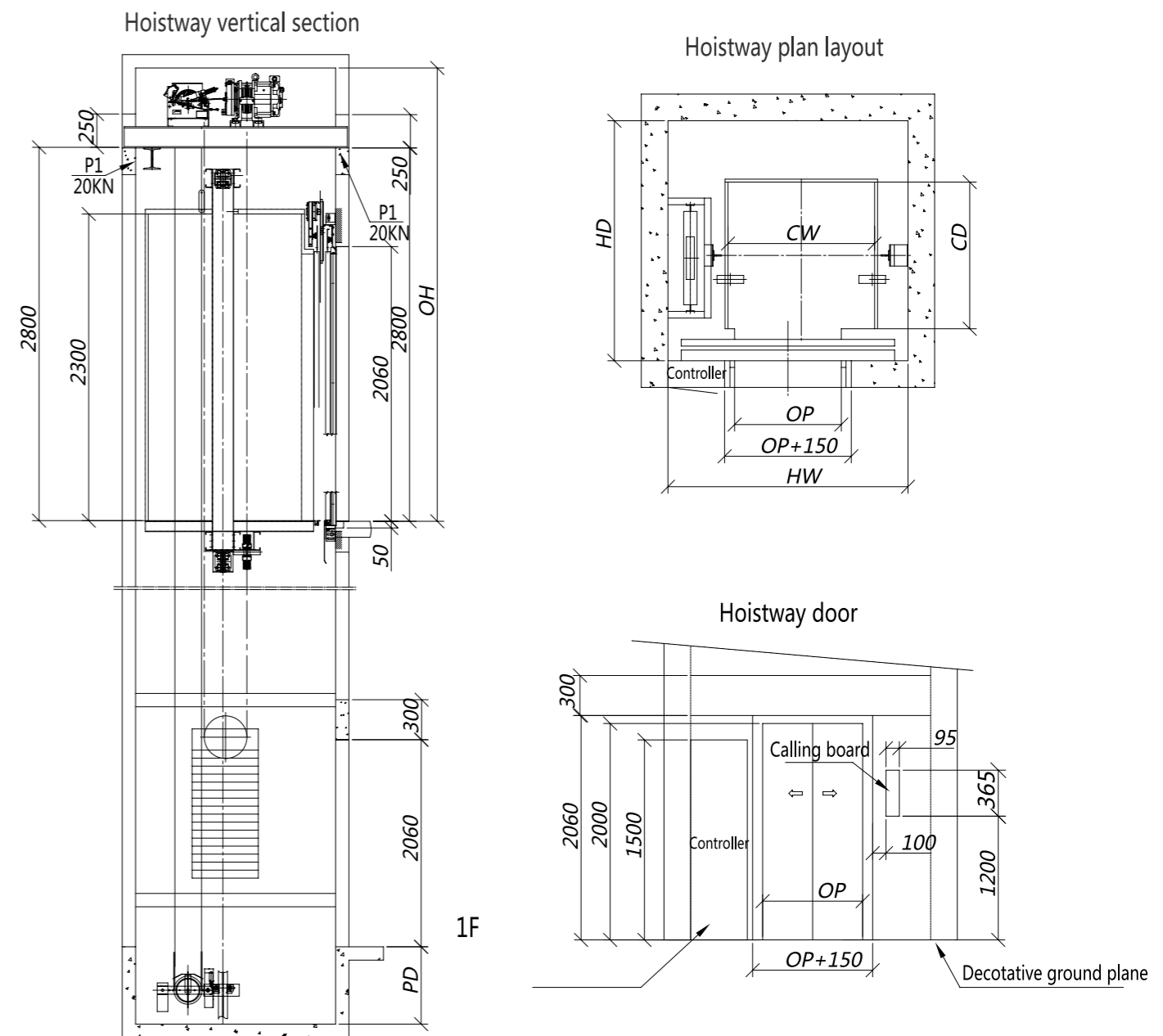
Hospital elevator construction parameters



Model	Load/kg	Speed/ms	Motor power /KW	Car dimension/mm			Hoistway size /mm				Machine room size/mm			Max. loading	Max. lifting height/m
				CW	CD	OP(Side)	HW	HD	PD	OH	MW	MD	MH		
SEB1600	1600 (not breakthrough)	1.0	10.5	1400	2400	1100	2400	2900	1500	4300	2400	2900	2800	14	45
		1.75	18.3	1400	2400	1100	2400	2900	1600	4500	2400	2900	2800	24	78
SEB1600	1600 (breakthrough)	1.0	10.5	1400	2400	1100	2500	2900	1500	4600	2400	2940	2800	14	45
		1.75	18.3	1400	2400	1100	2500	2900	1600	4700	2400	2940	2800	24	78

The schematic Drawing of civil work is for reference only

Home elevator construction parameters



Model	Load/kg	Speed/ms	passengers	Car dimension/mm	Hoistway size /mm		Door-opening size/mm	Top floor height/oh	Pit depth /pp
					CW*CD	OP			
SEJ320	320	0.4	4	1100x950	1800	1300	800x2000	≥3400	≥600
SEJ400	400	0.4	5	1100x1100	1800	1500	800x2000	≥3400	≥600

The schematic Drawing of civil work is for reference only



ESCALATORS

ESCALATORS

E200/T200 Escalator moving walk

HAVE A METEORIC RISE IN A NOBLE AND IMPOSING MANNER.

In addition to public transportation, our technology has created a new type of escalator 25 m height, SCHNEIDER's escalator, moving walk products are made of high strength metal material, upholding the concepts of skill and craftsmanship, with the advanced CAD / CAM technology to design, manufacture, install and commission, to ensure that the products have the appearance and performance to achieve the "compact, attractive, and durable", criterion that we believe is the ideal state for all our products.

- High angle truss: anti-corrosion, high strength.
- Modularized design: has the advantages of compact structure and strong versatility.
- Larger diameter step roller: stable operation. Less noise, longer life expectancy.
- An entrance protection: with brush, more safety features.
- Stainless steel apron and cover: more luxurious and elegant.
- Variable frequency drive control: obvious and effective energy savings improves the operation of lift equipment, reduces the operation cost.



E200 Escalator

URBAN FLAVOR , CHARM SCENE.

SCHNEIDER's E200 escalator offers a consummate structure, elaborate stairway, delicate belt, and an attractive outline. The E200 is widely applicable for large passenger flow areas such as malls, supermarkets, subways, airports, and much more. It adds a charming mobile view to its environment adding a meteoric rise in a noble and imposing manner.



T200 Moving walk

THE EVERLASTING POPULAR DESIGN & QUALITY.

SCHNEIDER's T200 Moving walk elevates transportation to a newly concise and comfortable realm, it not only satisfies the conveying problem of large passenger flow, but also achieves the "compact, attractive, and durable" criterion that we believe is the ideal state of all our products.

Safety device

STANDARD SAFETY DEVICE

1. Lack of phase, error phase protection

If lack phase or error phase has been checked out, the escalator (auto-walk) will automatically stop the operation.

2. Motor over-load protection

When the current exceeds 15% of the current rating, the escalator will automatically stop the operation.

3. Electrical appliance loop protection

It offers the automatic circuit disconnecting device to protect the circuit and mains components of the escalator (auto-walk).

4. Handrail inlet protection

When some foreign substance has been clipped in the handrail inlet, the escalator (auto-walk) will automatically stop the operation.

5. Comb plate safety device

When some foreign substance has been clipped in or between the combs, the escalator (auto-walk) will automatically stop the operation.

6. Step sagging protection device

When there is abnormal step bending, the escalator (auto-walk) will stop the operation before the step entering into the comb plate.

7. Broken drive-chain safety device

When the drive-chain has been over-stretched or it is broken, the escalator (auto-walk) will automatically stop the operation.

8. Broken step chain protection

When the step (pallet) chain has been over-stretched or it is broken, the escalator (auto-walk) will automatically stop the operation.

9. Over-speed protection

When there is over-speed to the escalator (auto-walk), it will automatically stop the operation.

10. Direction reversal protection

When it comes the unintentional reversal of the direction of travel, the escalator (auto-walk), will automatically stop the operation.

11. Security line

The yellow synthetic resin security line is located in the front position and two sides of the escalator tread so that the passengers will not tread in-between the edge of the adjacent step and the lift group lengthened skirt panel. The security line on both sides of the step is higher than tread surface. (The auto-walk offers the selective yellow spray-painted security line.)

12. Emergency button

When the button has been pressed down, the escalator (auto-walk), will stop the operation.

13. Skirt panel protection

When some foreign substance has been clipped in between the skirt panel and the step, the escalator (auto-walk) will automatically stop the operation.

14. Brake protection

When the electric force falls short of supply or it acts any of the safety device, the brake function goes into effect by the safety device through the spring resilience action. In this way, the escalator (auto-walk) stops the operation.

15. Safety inspection switch

It is a safety device to prevent from the escalator starting during the inspection and maintenance.

16. Step illumination

Illumination exists in the upper and lower ends of the escalator, in the lower part of the step in order to remind the passengers of the security matters.

17. Alarm bell starting device

The alarm bell rings when it starts the escalator in order to remind the passengers of the security matters.

18. Control device for handrail breakage

When the handrail is broken, the escalator will automatically stop the operation.

OPTIONAL SAFETY DEVICE

19. Handrail speed monitor

When the handrail speed versus step is slower than certain percentage, the escalator (auto-walk) will stop the operation.

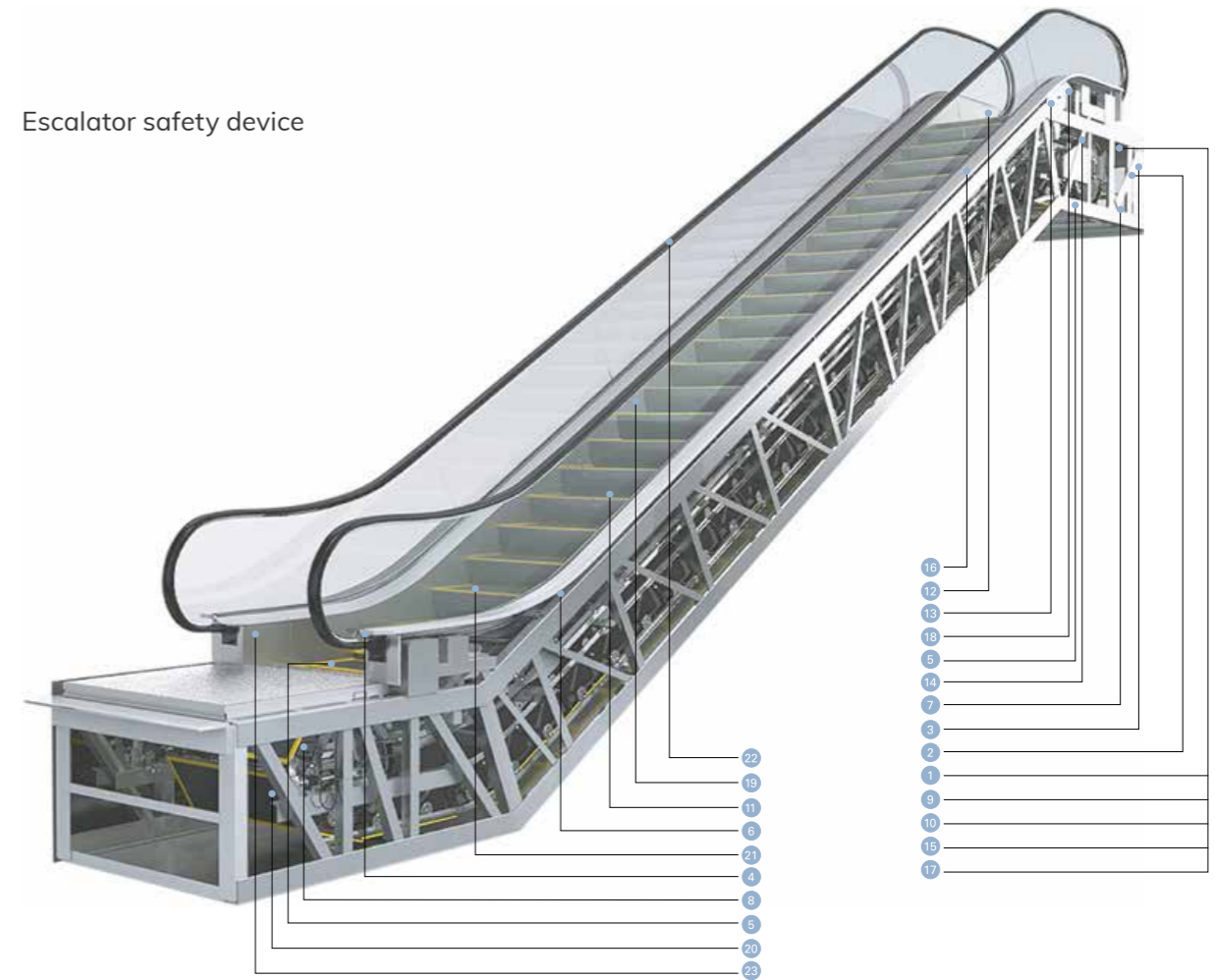
20. Skirt panel brush

The brush that has been installed between the skirt panel and the step will prevent the passengers from touching the skirt panel. (It is not merely restricted to the escalator.)

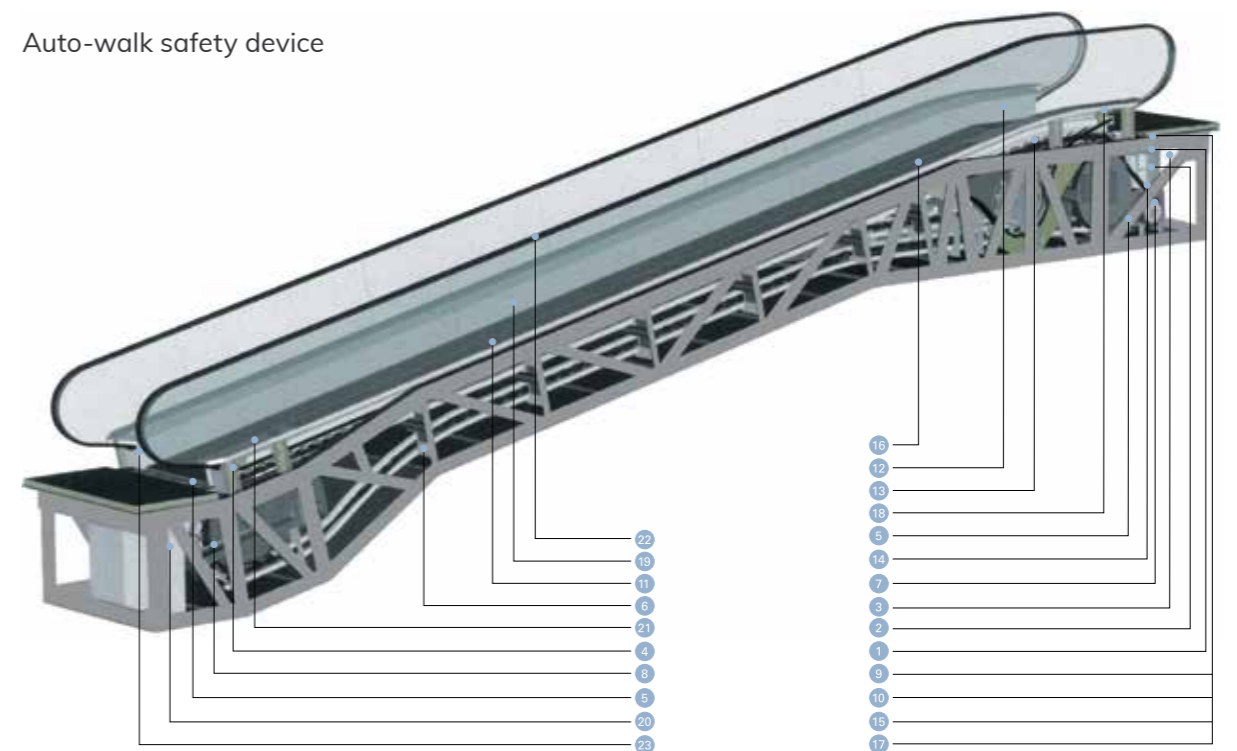
21. Emergency brake

It prevents from the escalator slide and ensures the human security in case of the drive chain breakage or the out-of-order of the brake. (It should be allocated with the emergency brake $6m < H$.)

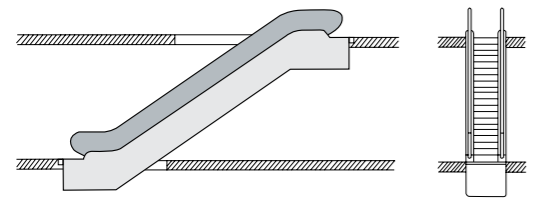
Escalator safety device



Auto-walk safety device

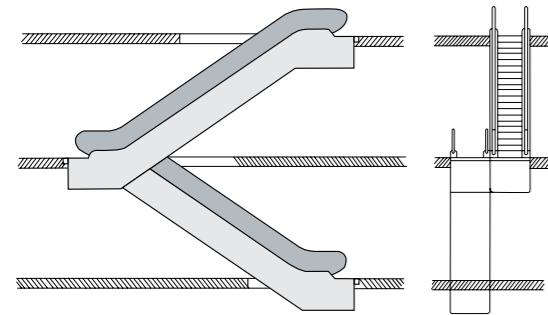


Escalator Arrangements Planning Guide



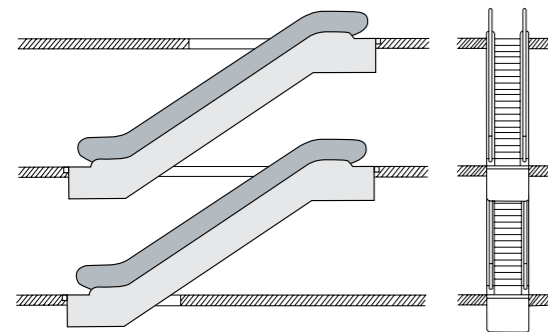
SINGLE UNIT ARRANGEMENT

Particularly suitable for transporting passengers between two floor levels, where passenger flow is in one direction, although on-demand starting can be utilized to allow travel in both two directions (e.g up in the morning and down in the evening)



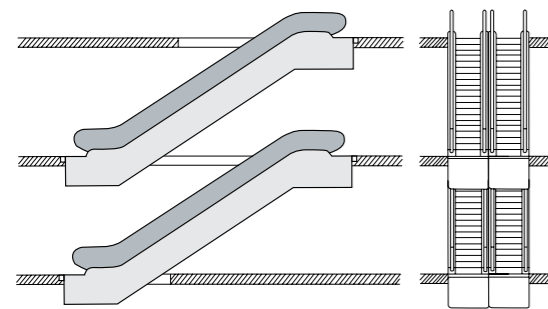
CONTINUOUS ARRANGEMENT (ONE TRAVEL DIRECTION)

Mainly suitable for small department stores, between three sales floor levels. More space required than the interrupted arrangement.



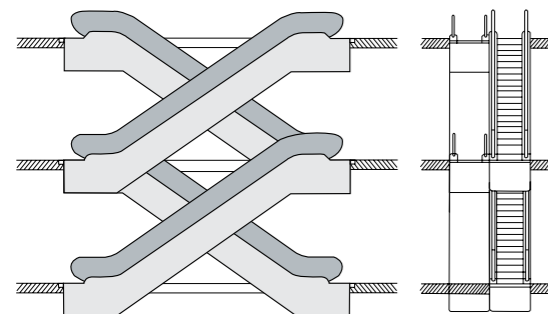
INTERRUPTED ARRANGEMENT (ONE TRAVEL DIRECTION)

Passengers have to make a short detour to the next escalator, strategically placed displays alongside the route of this detour can help to increase sales by encouraging impulse buying.



MULTI-LEVEL PARALLEL ARRANGEMENT (INTERRUPTED TRAFFIC, TWO TRAVEL DIRECTIONS)

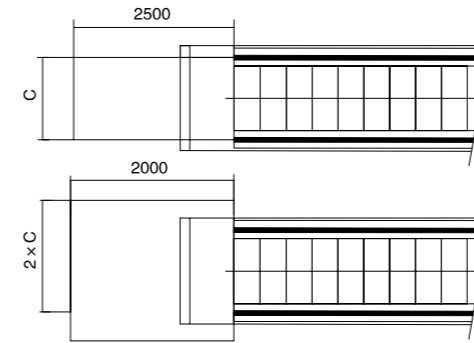
Mainly used in department stores and public buildings with a heavy traffic flow. When there are three or more escalators, the possibility to reverse the direction of travel of both escalators depending on the usage or traffic flow, this arrangement is economical since no decorative truss cladding is required.



MULTI-LEVEL CRISS-CROSS ARRANGEMENT (CONTINUOUS TRAFFIC FLOW, TWO TRAVEL DIRECTIONS)

Mainly used in major department stores, public buildings and public transport buildings, reduce congestion at the landing area by separating upwards and downwards travelling passengers.

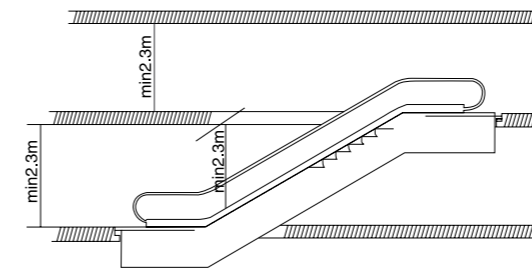
Installation notice



BESIDES COMPLYING WITH THE DRAWING OF THE CONTRACT, ATTENTION SHOULD ALSO BE DRAWN TO THE FOLLOWING.

To ensure the safety of the escalator and moving walk, free space should be large enough in the landing area. (See the minimum size on right)

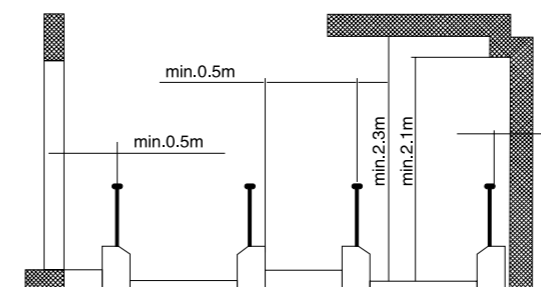
C = handrail belt width



VERTICAL SAFETY DISTANCE

There should be at least 2.3m upside safety distance starting upward from the step board.

Notice : If the vertical rise of one escalator, which is installed above another one, is less than 3.3m, the upside safety distance can not reach 2.3m.



ESCALATORS AND MOVING WALK HORIZONTAL SAFETY DISTANCE

The horizontal distance between the handrail edge and the wall or other objects should be more than 80mm.

The vertical distance above the step board should be more than 2.3m.

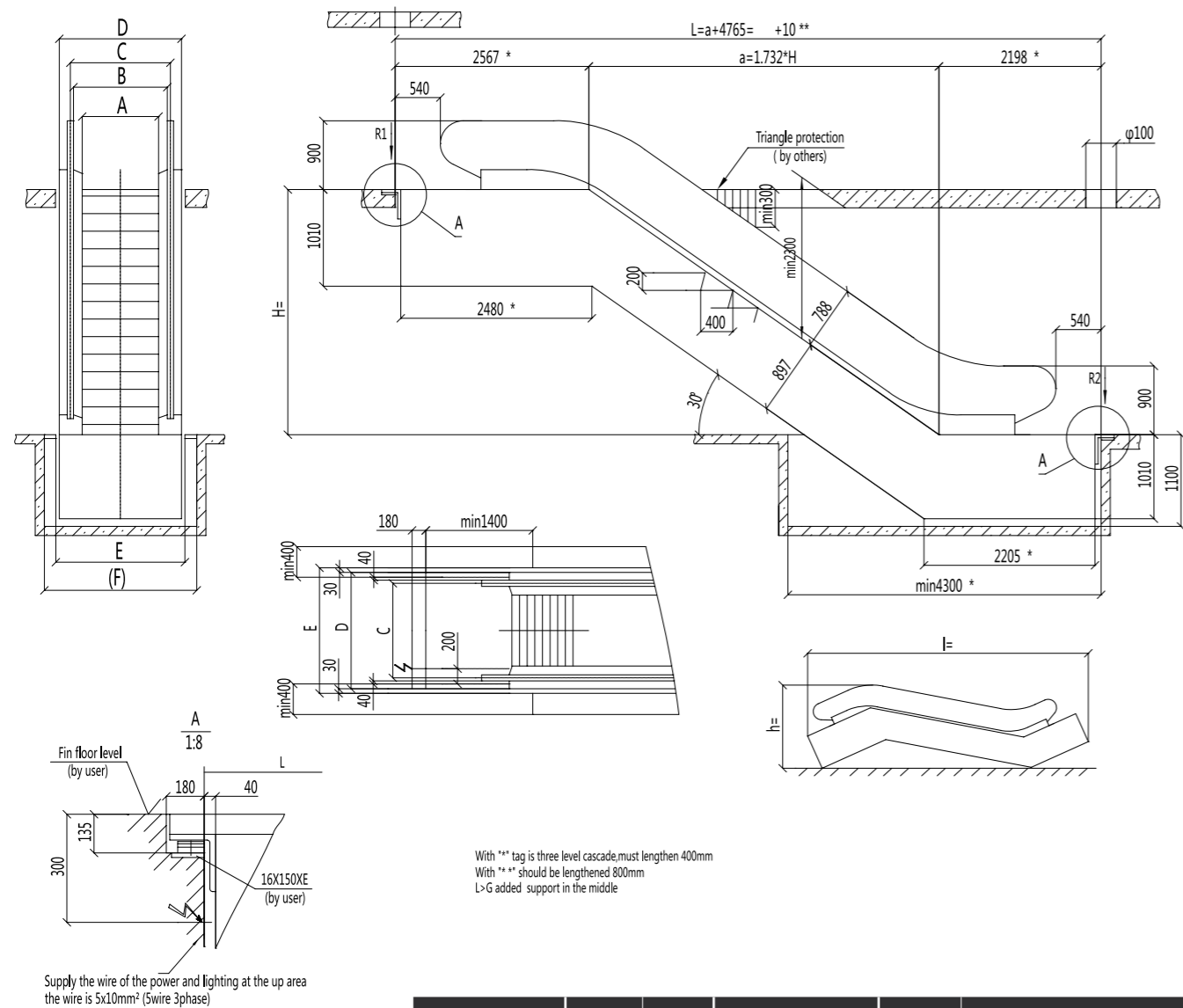
The vertical distance above the handrail space should be more than 2.1m.

In case of floor spaces or the cross layout of escalators and moving walk, the safety distance between the handrail center and the object should be more than 0.5m.

If the above-mentioned requirements cannot be met, a special protection device and a bumper rail should be used.

SES30 Escalator construction sketch

SES30 — 600
800 K
1000



With *** tag is three level cascade, must lengthen 400mm
With ** should be lengthened 800mm
L>G added support in the middle

Supply the wire of the power and lighting at the up area the wire is 5x10mm² (5wire 3phase)

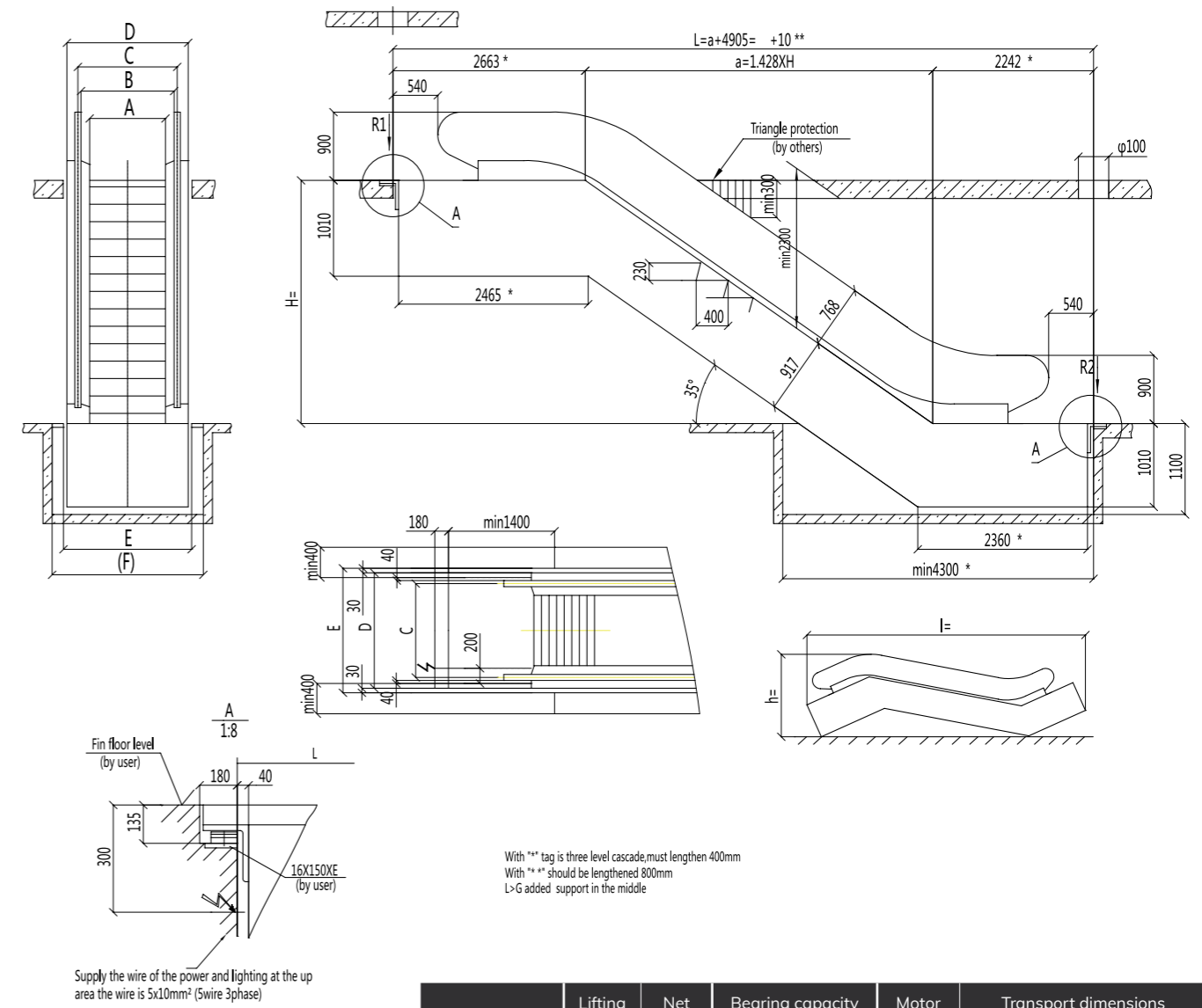
	SES30-600K	SES30-800K	SES30-1000K
A	600	800	1000
B	758	958	1158
C	838	1038	1238
D	1200	1400	1600
E	1260	1460	1660
F	1910	2110	2310
G	18500	16900	15700

Model	Lifting height mm	Net weight Kg	Bearing capacity		Motor power Kw	Transport dimensions		
			R1(kn)	R2(kn)		H	h	l
SES30-600K (3600 P/h)	3000	5700	46	41	5.5	3000	2750	10900
	3500	6000	49	44		3500	2780	11890
	4000	6400	52	47		4000	2810	12880
	4500	6800	56	50		4500	2830	13870
	5000	7100	59	53		5000	2840	14860
	5500	7500	62	56		5500	2860	15860
SES30-800K (4800 P/h)	3000	5900	52	47	5.5	3000	2750	10900
	3500	6300	56	50		3500	2780	11890
	4000	6700	60	54		4000	2810	12880
	4500	7100	64	57		4500	2830	13870
	5000	7400	68	60		5000	2840	14860
	5500	8200	74	66		5500	2860	15860
SES30-1000K (6000 P/h)	3000	6300	59	53	8	3000	2750	10900
	3500	6700	64	57		3500	2780	11890
	4000	7100	68	61		4000	2810	12880
	4500	7500	73	65		4500	2830	13870
	5000	8300	79	71		5000	2840	14860
	5500	8700	84	75		5500	2860	15860
SES30-1000K (6000 P/h)	5000	8300	79	71	11	5000	2840	14860
	5500	8700	84	75		5500	2860	15860
	6000	9200	88	79		6000	2870	16850

The schematic Drawing of civil work is for reference only

SES35 Escalator construction sketch

SES35 — 600
800 K
1000



With *** tag is three level cascade, must lengthen 400mm
With ** should be lengthened 800mm
L>G added support in the middle

Supply the wire of the power and lighting at the up area the wire is 5x10mm² (5wire 3phase)

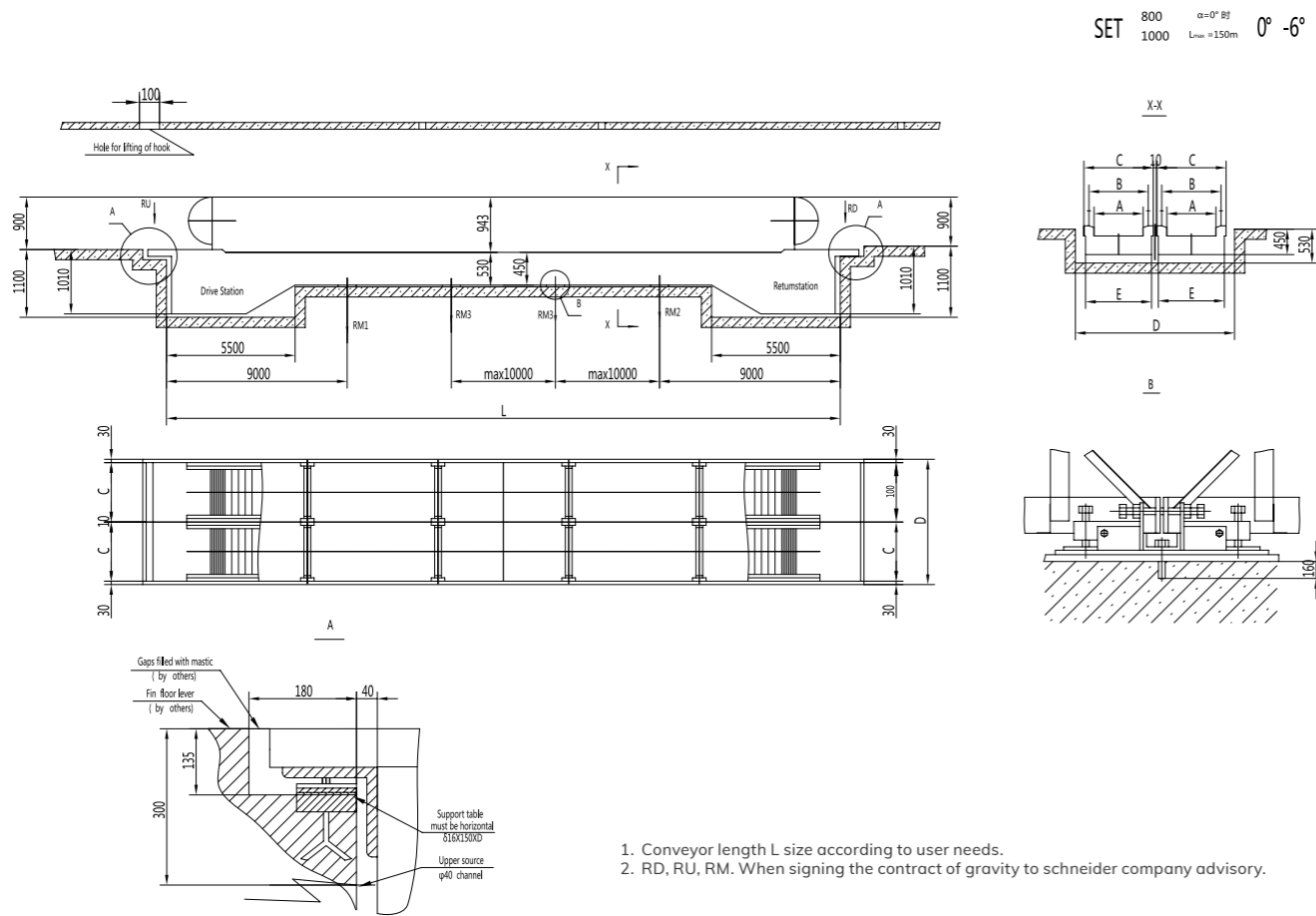
	SES30-600K	SES30-800K	SES30-1000K
A	600	800	1000
B	758	958	1158
C	838	1038	1238
D	1200	1400	1600
E	1260	1460	1660
F	1910	2110	2310
G	18500	16900	15700

Model	Lifting height mm	Net weight Kg	Bearing capacity		Motor power Kw	Transport dimensions		
			R1(kn)	R2(kn)		H	h	l
SES35-600K (3600 P/h)	3000	5400	43	39	5.5	3000	3090	10180
	3500	5700	46	41		3500	3130	11030
	4000	6000	49	44		4000	3160	11890
	4500	6400	52	46		4500	3180	12750
	5000	6700	54	49		5000	3210	13610
	5500	7000	57	51		5500	3220	14470
SES35-800K (4800 P/h)	3000	5600	49	44	5.5	3000	3090	10180
	3500	6000	52	47		3500	3130	11030
	4000	6300	56	50		4000	3160	11890
	4500	6600	59	53		4500	3180	12750
	5000	7000	62	56		5000	3210	13610
	5500	7300	65	59		5500	3220	14470
SES35-1000K (6000 P/h)	3000	6000	56	50	8	3000	3090	10180
	3500	6400	60	53		3500	3130	11030
	4000	6700	64	57		4000	3160	11890
	4500	7100	67	60		4500	3180	12750
	5000	7400	71	64		5000	3210	13610
	5500	8200	77	69		5500	3220	14470
SES35-1000K (6000 P/h)	5000	7400	71	64	11	5000	3210	13610
	5500	8200	77	69		5500	3220	14470
	6000	8500	81	72		6000	3240	15330

The schematic Drawing of civil work is for reference only

SET0-6

Horizontal moving walks construction sketch

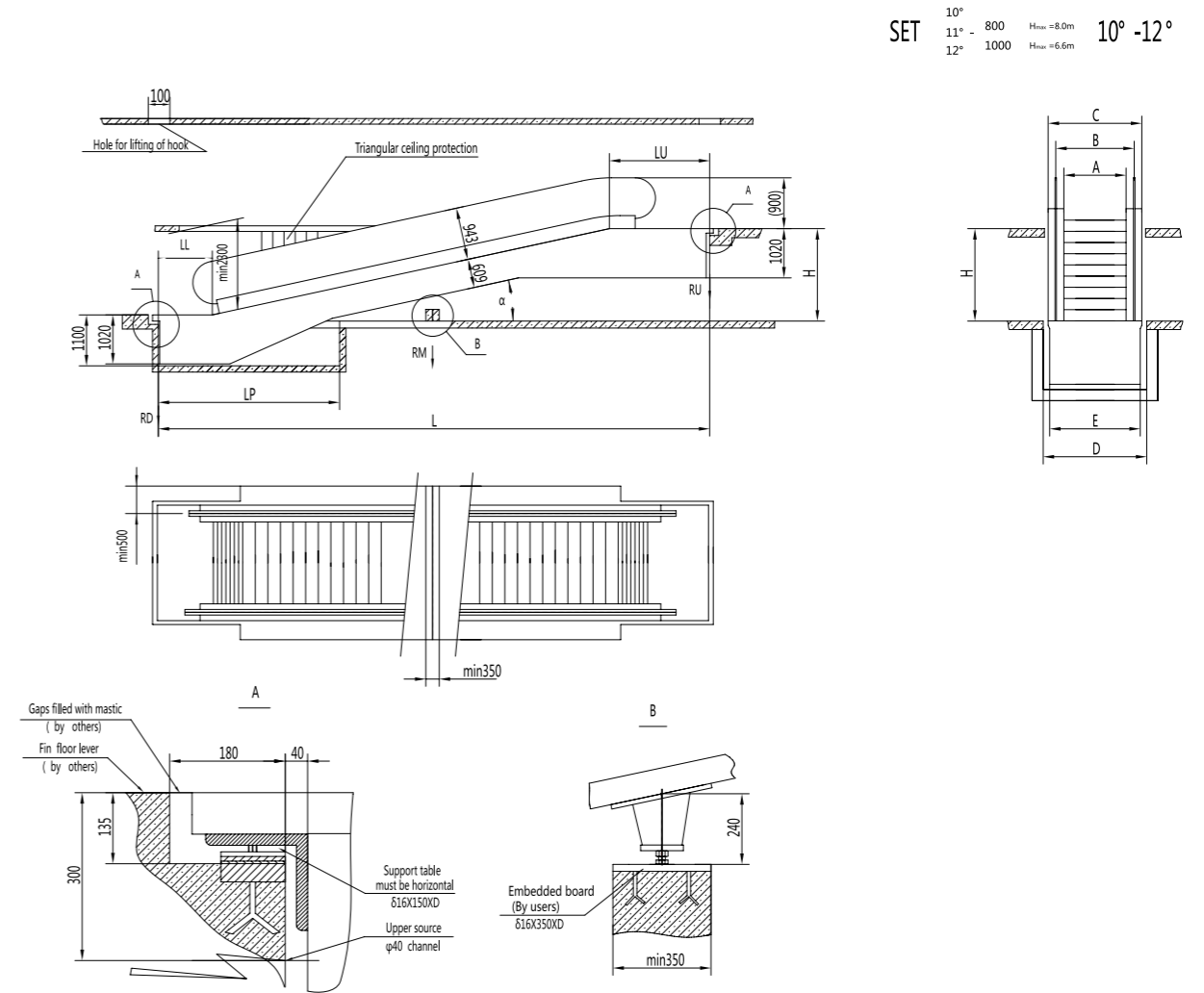


	SET800	SET1000
A	800	1000
B	1110	1310
C	1400	1600
D	2870	3270
E	1360	1560

Speed (m/s)	0.5		0.65		0.75	
Width (mm)	800	1000	800	1000	800	1000
Power (KW)	Maximum lengths of the transmission (m)					
5.5	84	73	71	61	65	55
8	124	107	104	89	95	87
11	150	150	150	139	147	125
15				150	150	150

SET0-12

Compact moving walk construction sketch



Specification (A)	B	C	D	E	K1	K2
ST1000	1310	1590	1700	1560	15000	30000
SET800	1110	1390	1500	1360	16300	32600

α	10°	11°	12°
LU	1732	1740	1739
LL	1031	1031	965
LP	5500	4800	4500
L	5.6713XH+2763	5.1446XH+2771	4.7046XH+2956



OUR
PRESENCE

OUR NETWORK

IT CO-EXISTS WITH THE WORLD AND EXECUTES WIN-WIN POLICY WITH THE ENVIRONMENT.

SCHNEIDER has an extensive worldwide network. We offer professional and advanced marketing services covering all regions and countries we operate from. Through the use of computerized information platforms, market information is analyzed and disseminated in a timely and efficient manner. Responses to changing market environments are comprehensively and rapidly initiated.

SCHNEIDER uses German technology. We has cutting edge manufacturing facilities in China that stringently adhere to quality standards set by SCHNEIDER Germany. Ensuring customer satisfaction with top-nodge quality products and services for the best prices.

